



IN EVERY
PROCESS,
WE SHAPE YOU
DYNAMICALLY



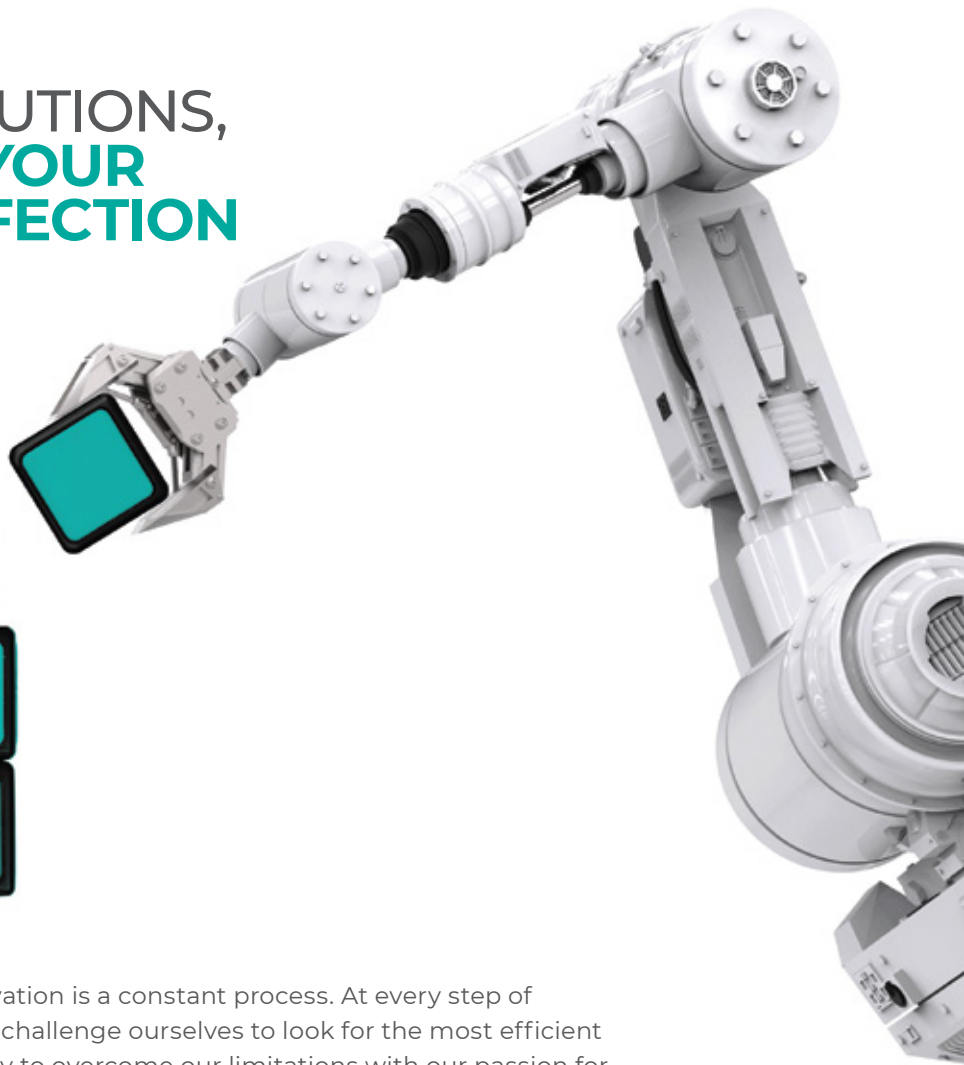
www.schilthornprecision.com



DELIVERING PRECISION, **TO HELP YOU ACHIEVE EMINENCE**

At Schilthorn, we leverage our extensive experience in all aspects of manufacturing, process improvement & supply chain development to customize ways for our clients to deliver excellence. Our efforts are driven towards finding methods to enhance your productivity & output. At every step, we attempt to deliver not just precision engineering parts but innovative methods to optimise your business. Right from procuring raw materials, process designing, processing, surface treatments to testing of units, quality assurance, delivery of products and more, we leave no stone unturned to develop perfect solutions that enhance your performance dynamically.

DYNAMIC SOLUTIONS, TO SIMPLIFY YOUR PATH TO PERFECTION



At Schilthorn, breakthrough innovation is a constant process. At every step of crafting a unique component, we challenge ourselves to look for the most efficient ways to do wonders for you. We try to overcome our limitations with our passion for ingenious engineering and our ambitious mindset. We believe that to achieve stupendous success together,

Let's Put Innovation First.

Vision

To be globally recognized for our unparalleled excellence in precision engineering through our breakthrough innovations and technological advancements.

Mission

We work towards creating strategic engineering solutions and delivering quality-compliant & reliable precision parts to help our clients optimize their manufacturing operations.

Our efforts and beliefs are deeply rooted in our core values:



Innovative Leadership



Environmental Consciousness



Cost-Effectiveness



Quality Assurance



Team Synergy



Punctual Deliveries

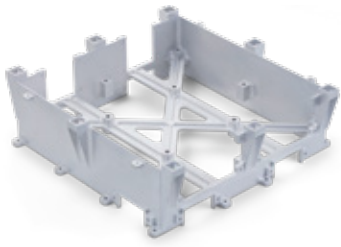




OPTIMIZING MANUFACTURING, TO ENHANCE YOUR PERFORMANCE

With over a decades of experience in manufacturing, new product development & production processes, we have devised efficient methods that increase our productivity and our clients' profits. Our state of the art manufacturing facility, operational control processes, comprehensive inspection devices, built-in quality check points and no-compromise quality control systems help us improve our quality standards at low costs, maximize manufacturing efficiency and guarantee indispensable precision parts.

Precision Machining Components



VMC Components



Turning & TurnMill Components



HMC Components

Brass Components for HVAC



Flare Connectors



Distributors

CPVC Inserts



Brass Inserts

Fabricated Components for Chillers



Dishend & End Covers



Tubesheets



Shell Assemblies

Molding Inserts



Fan Blower Inserts

Fasteners



Forged Bolts & Screws

Rubber Metal Components



Inserts & Grommets





INCREDIBLE ABILITIES, **TO STREAMLINE YOUR OPERATIONS**

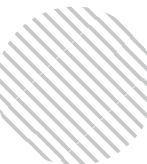
At Schilthorn, our methods and efforts are geared to ensure customer delight through top-notch manufacturing processes and cost effective solutions. Our engineering expertise, well-mapped manufacturing processes and our modern technical know-how help us deliver precision parts of the highest possible standards.





To help you strengthen the base of your operations and ensure that you always receive the best, our manufacturing abilities include some value-adding processes based on your specific component needs:

- **Vertical & Horizontal Milling**
- **Turning & Turn Mill**
- **Welding & Fabrication**
- **Forging**
- **Grinding**
- **Laser Cutting**
- **EDM**
- **Surface Treatment**
- **Rubber Molding**



REVOLUTIONARY FACILITIES, TO MAGNIFY YOUR EXCELLENCE

Through years of experience, we have developed a unique mix of innovative knowledge, manufacturing strengths and technically advanced machinery to ensure that our client's specific requirements like Geometric Dimensioning & Tolerancing (GD&T) & surface treatment can be accomplished.

To consistently deliver this, we have established a manufacturing system that meets the requirements of ISO 9001, IATF 16949 & AS9100



Precision Turning Centers

- 2 Axis Lathes
- TurnMills (Y-axis)
- Live Tooling
- Automatic Bar Feeder System



Welding

- TIG Welding
- MIG Welding



Tool Room Machinery & Equipments

- SPM & Automates
- Lathe Machine
- Drill Machines
- Surface Grinding Machine



High Precision Milling Centers

- Vertical Milling Centers
- Horizontal Milling Centers
- Renishaw WPS Probing System



Forging

- Hot Forging
- Cold Forging

ELIMINATING VULNERABILITIES, **TO DISCOVER YOUR GROWTH**

At Schilthorn, we not only deliver what you require, but devise what makes you better. We customize manufacturing processes to create precision parts that pose as 'building-blocks' towards simplifying your path to perfection.

Understanding requirements

Thorough analysis of product specifications, target costs and detailed needs.

Researching feasibility

Carrying out cost estimation analysis and feasibility studies for the entire manufacturing process.

Adding value innovation

Tailoring ingenious manufacturing plans to maximize productivity, optimize precision parts and minimize costs.

Initiating development

Developing and setting up manufacturing processes & facilities for precise results.

Crafting precision parts

Carrying out production that goes beyond basic quality requirements.

Delivering perfection

Shipping out precision, technological excellence and long-term cost optimization along with required precision parts.



OUR SECTORS, OUR VERSATILE CUSTOMERS

Our esteemed clientele and their varying requirements help us expand our horizons and broaden our skill set.



Space, Aerospace



HVAC



Automobile



Oil & Gas



CPVC Fittings



Fittings & Fasteners



Industrial Components



GROWING DYNAMICALLY, TO CREATE A GLOBAL IMPACT



Our Clients



Let's put innovation first.

Schilthorn Precision Engineering Pvt. Ltd.

Factory: Plot no 305 - Phase I, GIDC Estate, Chhatral, Gandhinagar 382729, Gujarat, INDIA.

+91 99041 00326 | info@schilthornprecision.com | www.schilthornprecision.com

Registered Office: 607, Abhishree Avenue, Nr. Nehrunagar Circle, Ahmedabad 380015, Gujarat, INDIA.